



JMF *Audio*

Manufacture de France[®], depuis 1985



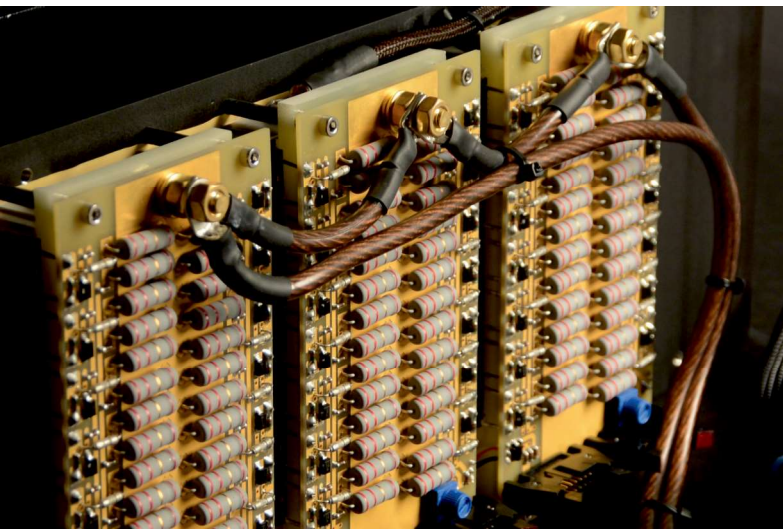


HQS 9001 mono power amplifiers, Orose® enclosure

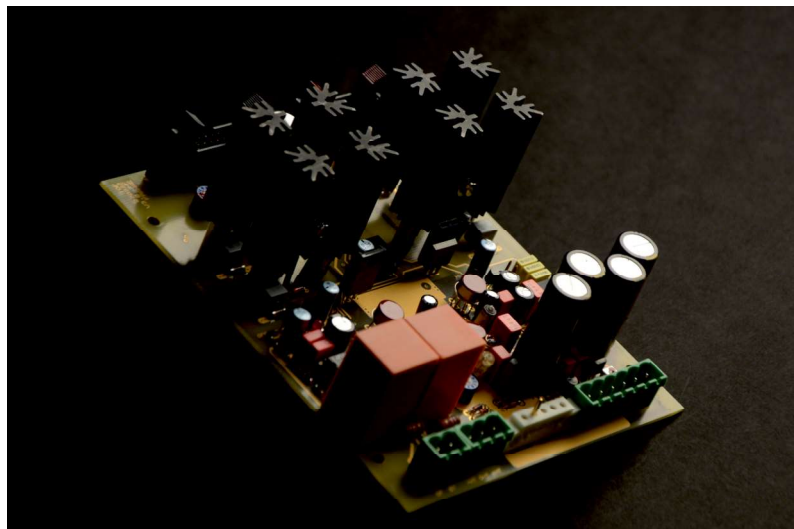
JMF Audio of France, founded by Jean-Marie Fusilier, has designed handcrafted state-of-the-art amplifiers, renowned for their high output power and natural sound rendering since 1985. The quality and performance of the JMF Audio components have convinced some of the most prestigious recording facilities in the world, from Switzerland to Tom Hidley's reference studios in Nashville (USA) to Japan, Italy, England, Russia, France... and more recently Norway with label 2L.

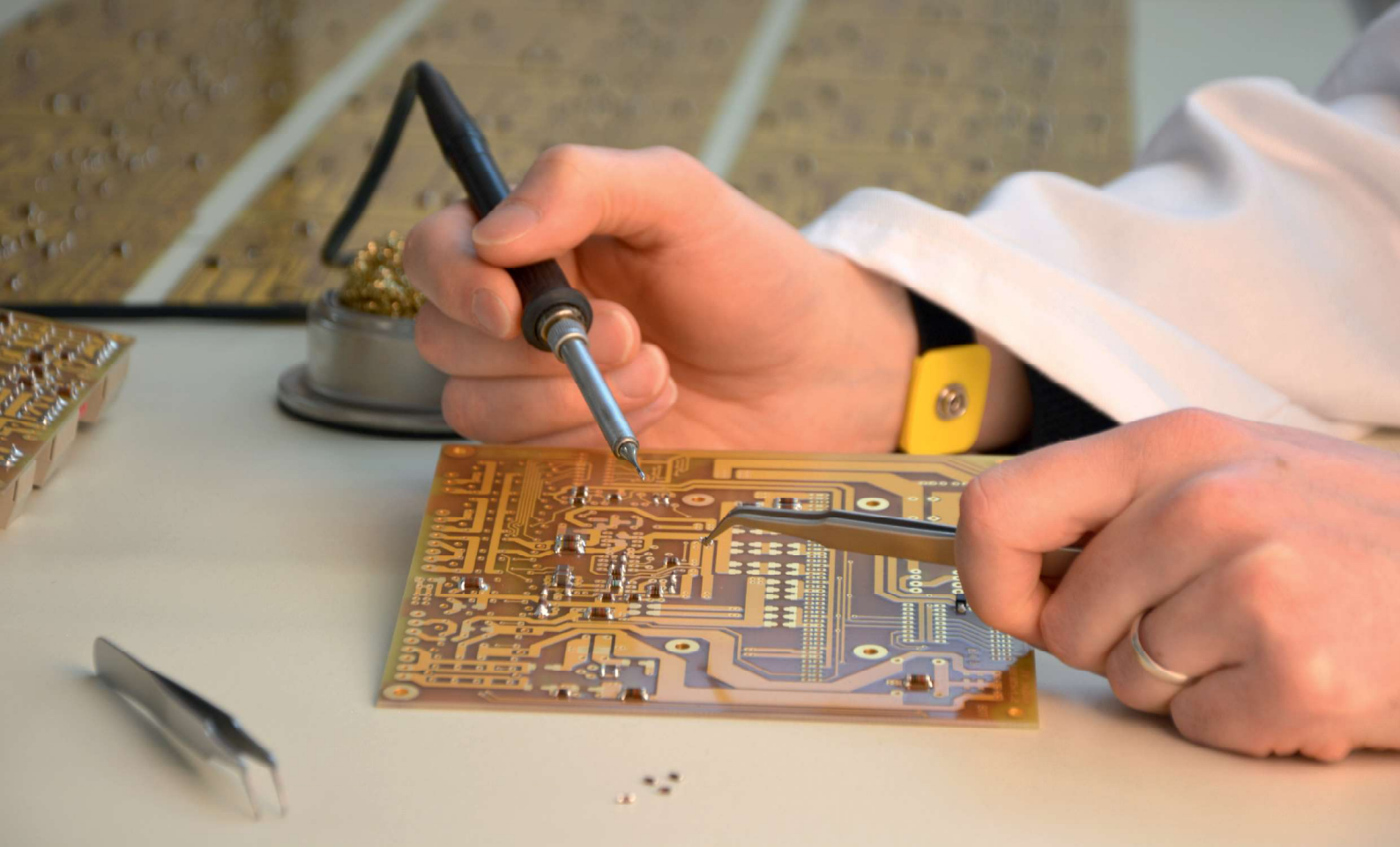
Headed with passion by a family of engineers that understands how music is produced and that has continuously invested in research and development, JMF Audio has created a complete product line of excellence; for the discerning audio connoisseurs and music lovers.

MTP high-current output stage



LDA high-voltage driver board



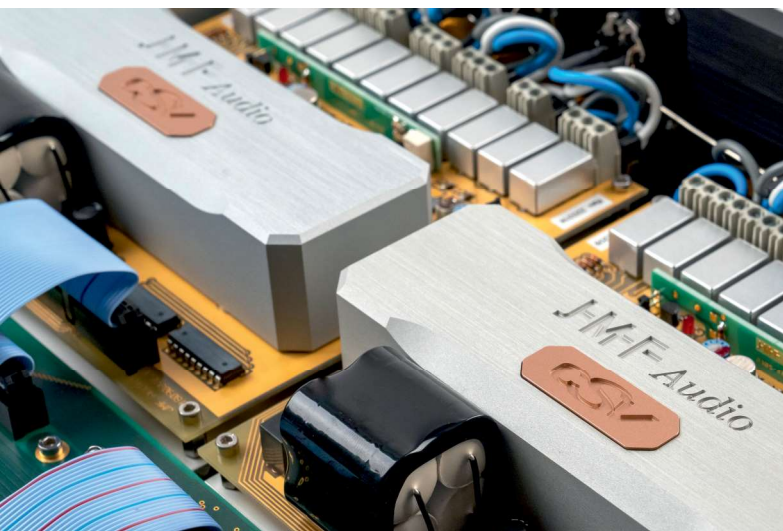


JMF Audio's proprietary PGP™ analog printed circuit boards require every single component to be hand mounted and soldered by our experienced technicians using bespoke soldering material. More than 600 components are populated on each board, on both sides.

JMF Audio believes that only precision can guarantee the desired musicality and expression for all genres of music. In addition to innovation, advanced engineering and excellent measurement results, our process involves a subtle convergence of scientific rigor, evaluations by listening and craftsman's work of art to reach the pinnacle in musical rendering: a three dimensional sound stage, beauty of timbres, subtle ambiances, the fullness, the emotion.

Only a few parameters are measurable with traditional methods and this is where knowhow makes the difference. JMF Audio's products and components are designed in-house and assembled by our experienced technicians. Every unit undergoes a hundred-hour minimum burn-in period before tests and calibrations. Every unit is verified by listening in our studios before shipment, to ensure that every customer receives the best. Each JMF Audio product brings the artists closer to the listener... We believe we make Instruments for the music®.

PRS 1.5 dual-mono preamplifier



HQS 9001 mono power amplifier





PHS 7.3 dual-mono phono pre-amplifier



PCD 302 dual-mono power line filter (US version, rear view)

HQS 9001, HQS 7001, HQS 6002 power amplifiers

PRS 1.5 line pre-amplifier

PHS 7.3, PHS 7.2 phono pre-amplifiers

PHZ 8.1 phono balancing interface

PCD 302, PCD 102 power line filters

MBR 1 remote control

SR8, SR4 speaker links

CM8, CM4 line interconnects

CM4 PHONO tone-arm to phono pre-amplifier

DP5 digital balanced interconnect

PC3 power cord